

LAPTM5 Antibody (N-term)
Affinity Purified Rabbit Polyclonal Antibody (Pab)
Catalog # AP10077a

Specification

LAPTM5 Antibody (N-term) - Product Information

Application	WB, FC, IHC-P,E
Primary Accession	Q13571
Other Accession	Q2KJA5 , NP_006753.1
Reactivity	Human
Predicted	Bovine
Host	Rabbit
Clonality	Polyclonal
Isotype	Rabbit IgG
Antigen Region	23-49

LAPTM5 Antibody (N-term) - Additional Information

Gene ID 7805

Other Names

Lysosomal-associated transmembrane protein 5, Lysosomal-associated multitransmembrane protein 5, Retinoic acid-inducible E3 protein, LAPTM5, KIAA0085

Target/Specificity

This LAPTM5 antibody is generated from rabbits immunized with a KLH conjugated synthetic peptide between 23-49 amino acids from the N-terminal region of human LAPTM5.

Dilution

WB~~1:1000
FC~~1:10~50
IHC-P~~1:50~100
E~~Use at an assay dependent concentration.

Format

Purified polyclonal antibody supplied in PBS with 0.09% (W/V) sodium azide. This antibody is purified through a protein A column, followed by peptide affinity purification.

Storage

Maintain refrigerated at 2-8°C for up to 2 weeks. For long term storage store at -20°C in small aliquots to prevent freeze-thaw cycles.

Precautions

LAPTM5 Antibody (N-term) is for research use only and not for use in diagnostic or therapeutic procedures.

LAPTM5 Antibody (N-term) - Protein Information

Name LAPTM5

Synonyms KIAA0085

Function May have a special functional role during embryogenesis and in adult hematopoietic cells.

Cellular Location

Lysosome membrane; Multi-pass membrane protein

Tissue Location

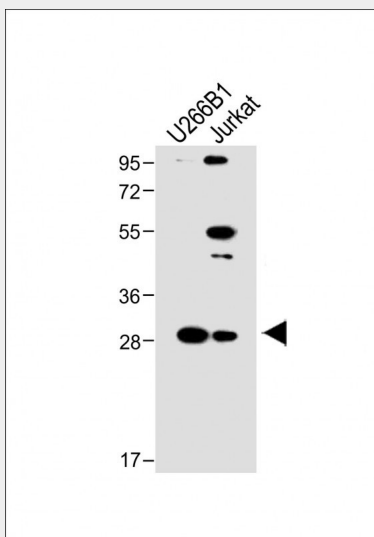
Preferentially expressed in adult hematopoietic tissues. High levels in lymphoid and myeloid tissues. Highly expressed in peripheral blood leukocytes, thymus, spleen and lung, followed by placenta, liver and kidney.

LAPTM5 Antibody (N-term) - Protocols

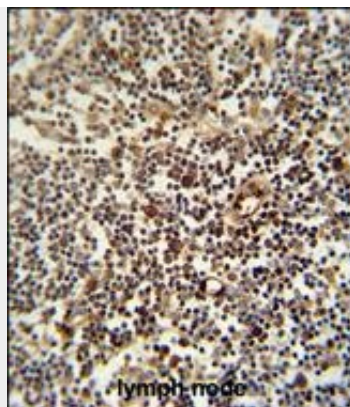
Provided below are standard protocols that you may find useful for product applications.

- [Western Blot](#)
- [Blocking Peptides](#)
- [Dot Blot](#)
- [Immunohistochemistry](#)
- [Immunofluorescence](#)
- [Immunoprecipitation](#)
- [Flow Cytometry](#)
- [Cell Culture](#)

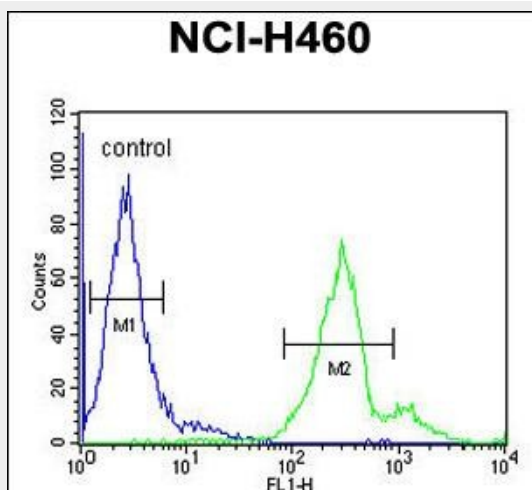
LAPTM5 Antibody (N-term) - Images



All lanes : Anti-LAPTM5 Antibody (N-term) at 1:1000 dilution Lane 1: U266B1 whole cell lysate Lane 2: Jurkat whole cell lysate Lysates/proteins at 20 µg per lane. Secondary Goat Anti-Rabbit IgG, (H+L), Peroxidase conjugated at 1/10000 dilution. Predicted band size : 30 kDa Blocking/Dilution buffer: 5% NFDM/TBST.



LPTM5 antibody (N-term) (Cat. #AP10077a) immunohistochemistry analysis in formalin fixed and paraffin embedded human lymph node followed by peroxidase conjugation of the secondary antibody and DAB staining. This data demonstrates the use of the LPTM5 antibody (N-term) for immunohistochemistry. Clinical relevance has not been evaluated.



LPTM5 Antibody (N-term) (Cat. #AP10077a) flow cytometric analysis of NCI-H460 cells (right histogram) compared to a negative control cell (left histogram). FITC-conjugated goat-anti-rabbit secondary antibodies were used for the analysis.

LPTM5 Antibody (N-term) - Citations

- [Genome-Scale CRISPR screen identifies LPTM5 driving lenvatinib resistance in hepatocellular carcinoma](#)